

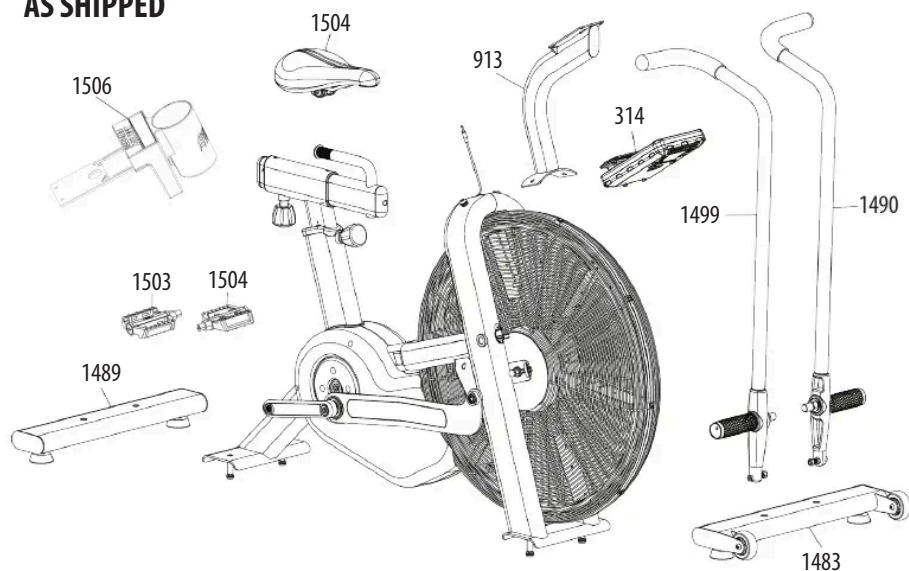
# QUICK START GUIDE

## ASSAULTBIKE

### PRO X

Part# 23-AS-1515

## AS SHIPPED



## ASSEMBLY

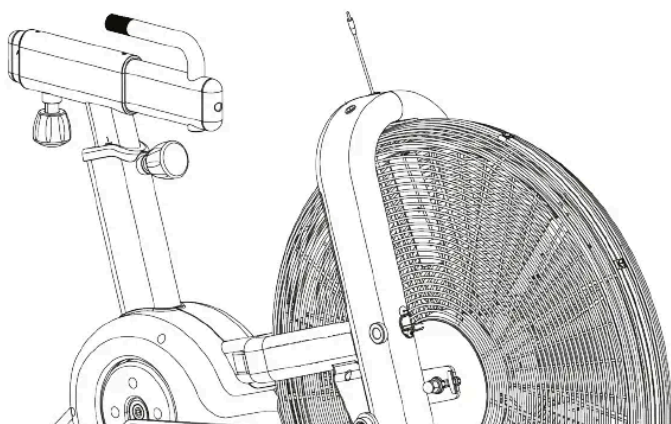
### Introduction

- The ASSAULTBIKE PRO X requires only minor assembly. All tools required to complete the initial setup and assembly have been included.
- Remove the unit and all parts from the carton and packaging. Confirm all parts shown in the section above titled "As Shipped" are included before attempting assembly of the ASSAULTBIKE PRO X.

### Assembly Step One:

#### Front & Rear Stabilizer Installation

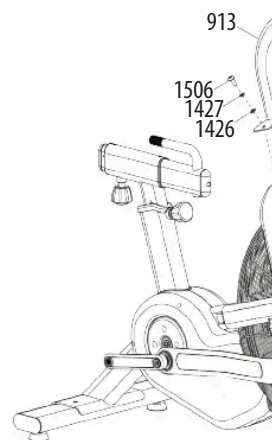
- Align the front stabilizer (1483) with the receiver on the main frame, and install the two screws, lock washers and flat washers (1506, 1427 & 1426) with the supplied 5mm hex wrench.
- Align the rear stabilizer (1489) with the receiver on the main frame, and install the two screws, lock washers and flat washers (1506, 1427 & 1426) with the supplied 5mm hex wrench.



### Assembly Step Two:

#### Console and Console Mast

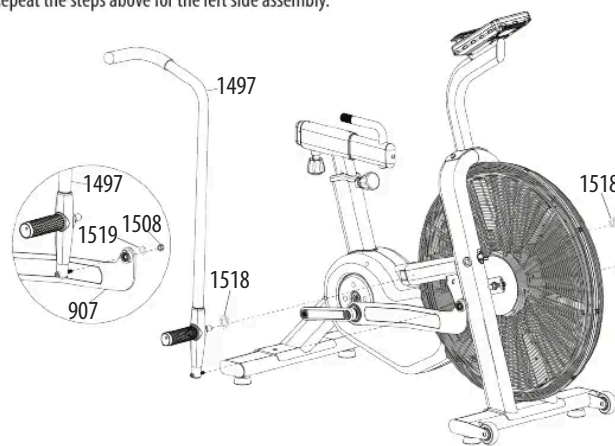
- Inspect the console cable (1499) for damage before connecting it to the bottom side of the console (913).
- Install the button head screws, lock washers, and flat washers (1506, 1427 & 1426) through the main frame with the supplied 5mm hex wrench.
- \*If you are installing the optional water bottle & phone holder, please follow the provided user manual packet. If you are not installing the optional water bottle & phone holder, please proceed to the next step.
- Plug the console wire (1499) into the pigtail wire that extends from the hole in the back side of the console (913). Do not pinch the cable.
- Insert the four screws (318) through the console mast (913) and into the back of the console (314).



### Assembly Step Three:

#### Handlebars

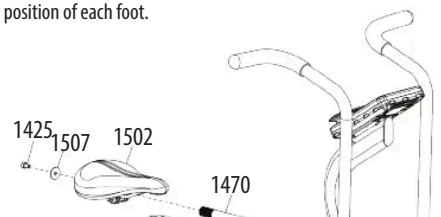
- Place the right handlebar assembly (1497) on the floor extending forward and away from the unit. Slide the spring washers (1518 & 1519) and lock nut (1508) from the hardware/tool kit package onto the right linkage arm (912) and install the smaller spring washer (1518) onto the right handlebar (1497). Raise the right handlebar (1497) and align the inside of the Upper Pivot Pin with the threaded mount on the main frame. Thread the pivot into the frame by hand, then tighten firmly with the supplied 19mm/22mm combo wrench.
- Repeat the steps above for the left side assembly.

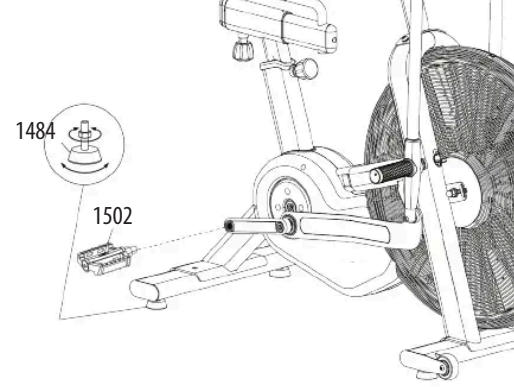
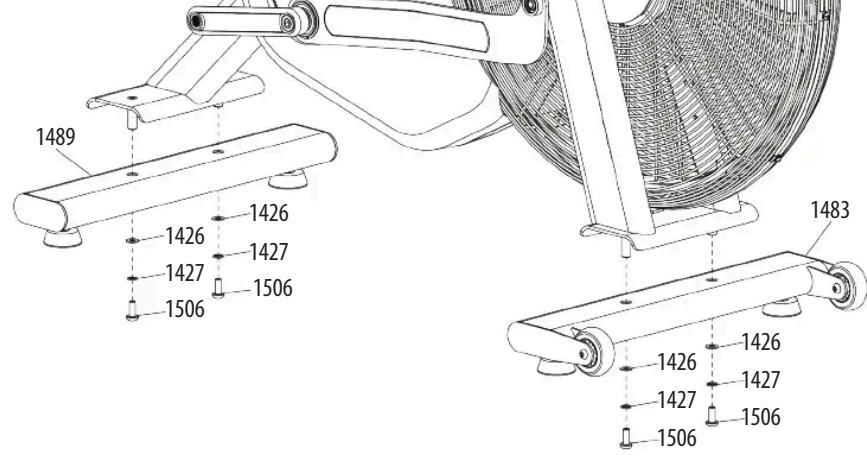


### Assembly Step Four:

#### Seat, Pedals, & Leveling the Unit Assembly

- Loosen the seat clamp assembly that is pre-installed onto the rails of the seat (1502) and slide the seat (1502) onto the seat slide (1470). Ensure the seat is level with the ground and fix both nuts firmly onto the seat slide (1470).
- Install the flat washer (1507) and hex screw (1425) into the end of the seat post assembly (1470).
- The left pedal (1501) axle threads are reversed, meaning the axle tightens in the opposite direction for installation. Engage the first few threads of the left pedal axle into the left crank by hand and then tighten firmly with the 19mm/22mm combo wrench.
- Repeat this process for the right pedal (1502). NOTE: The right pedal axle will be rotated clockwise.
- Ensure the unit is level and does not rock by adjusting the leveling feet (1484). There are two leveling feet (1484) on the rear stabilizer. As a starting point, loosen each foot by threading the assembly downward. Once the unit is stable, lock the leveling feet (1484) in place by tightening the jam nut upward/counter-clockwise.





**ASSAULT FITNESS**  
 5803 Newton Drive Carlsbad, Ca  
 For more information or questions regarding your equipment

